

FLOORING SURFACES TS

For Architects,
Specifiers and
General Contractors

Special Features

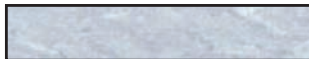
- Heavy duty
- Multi-purpose
- Ultimate studio floor
- Life expectancy: up to 18 years
- Guarantee: 7 years against wear

CUSTOM COLORS

Full Rolls / 6-10 weeks for delivery



9240 Timestep



9340 Timestep



9200 Timestep



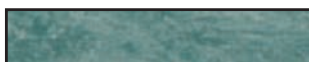
9180 Timestep



8580 Timestep



9080 Timestep



9220 Timestep



9040 Timestep



9170 Timestep

Marbleized colors represented in this catalogue may not be an exact match to the actual flooring. Request sample if color match is critical.

The ultimate multi-purpose floor ideally suited for all movement activities. Heavy duty portable and permanent flooring, which can be treated for differing degrees of non-slip.

ACTIVITY

Recommended for all movement activities including aerobics, multi-purpose, gymnastics and martial arts.

INSTALLATION

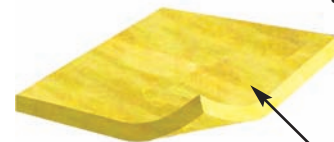
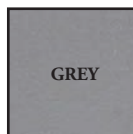
TS can be installed directly on a floating wood subfloor or hard wood surface, temporarily, semi-permanently, or permanently. It can be installed over wood flooring, using double-faced tape, adhesive or Re-Use-It.

MAINTENANCE

Clean weekly, using a detergent/degreaser that does not leave a residue.

TS

Stock Colors



- Heavy duty
- 6.58 ft. wide

Solid homogeneous
wear layer (2.0 mm)

See reverse side for flooring specifications and MSDS Ratings.

FLOORING SURFACES

TS

TYPE

Hardwearing, homogeneous contract floorcovering

COLORS

TS
2 standard marbled colors
9 special order color available
1 standard solid color

THICKNESS

Timestep:
.08" (2 mm) homogeneous wear layer

WIDTH & LENGTH

Timestep:
6.56' x 65' = 426.4 ft²
2 lm x 20 lm = 40 lm²

WEIGHT

Timestep:
5 lbs. per sq. yd.
2.71 kg per sq. meter



"Eco-friendly" products meet one or more of the following criteria: recyclable, reusable, made from recycled post consumer materials, made from renewable sources, made from managed forests, packaged in recyclable containers, made from recoverable waste materials or have no VOC's.

QUALITY STANDARDS

TS is manufactured to meet all the performance requirements of the listed standards:
Europe: EN 649: 1996
USA: ASTM F1913; F1700
Australia: AS2055.1(sheet)
Canada: CSA A126.6
Agrément: G5ws - (2.0mm; 2.5mm; 3.0mm); G3ws - (1.5mm)
Use area classification: EN 685:23/32/41 (1.5mm) - 23/34/43 (2.0mm; 2.5mm; 3.0mm)

FIRE RATINGS

BS 476: Part 7: 1997 - Class 2 (2.0mm)
ASTM E662 - <450 (2.0mm)
ASTM E648 - Class 1 (2.0mm)
AS1530.3 - Flamespread 0; Smoke developed 5 (2.0mm)
CAN/UCL S102.2-M88 - FSC1-4 SD-23 (2.0mm)
DIN 4102 - B1 (2.0mm)
DIN 4102 - B1 (2.0mm)
NT007 - Class G (2.0mm)
prEN 13501-1 - Class Bfl-S1 (2.0mm)
prEN ISO 9239-1 - > 10kw/m2 (2.0mm)
pr EN ISO 11925-2 - Pass (2.0mm)

SLIP RESISTANCE

Class D (dry conditions)
AS/NZS 4586 R9

DIMENSIONAL STABILITY

EN 649: 1996 - Group M

MARITIME STANDARDS

Timestep complies with regulations set by the following maritime bodies:
Marine Equipment Directive 96/98/EC. (2.0mm)
IMO MSC 61 (67) Annex 1, pts 2 & 5 and Annex 2 (Smoke & Toxicity) (2.0mm)
IMO MSC A 653 (16) (Surface Flammability) (2.0mm)
Lloyds Register of Shipping, UK Maritime & Coastguard Agency. (2.0)
Norwegian Maritime Directorate. (2.0mm)
Head of Netherlands Shipping Inspection.(2.0mm)
Canadian Coastguard. (2.0mm)

NOTES

For information regarding handling and installation, adhesives, maintenance, applications and chemical resistance, consult Aeson.

Information on this specification sheet supercedes all materials published prior to April 2011.